



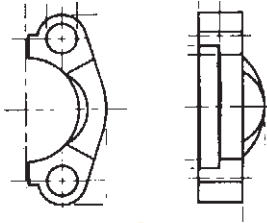
flanges australia

Quick Reference Guide to FA Flanges



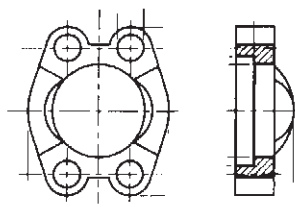
That Special **Flange** you need...
may be sitting on our shelf **RIGHT**
NOW!

SAE-split flange halves



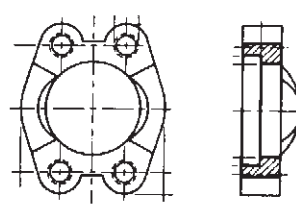
A1

SAE-flange clamp



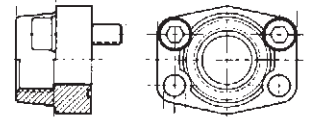
A3

SAE-flange clamp with tapped holes (metric)



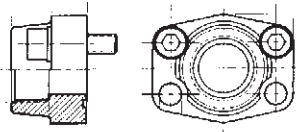
A4

SAE-BSPP threaded flange (female)



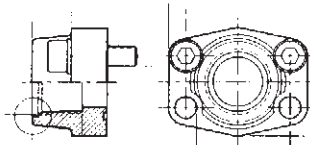
B1

SAE-NPT threaded flange



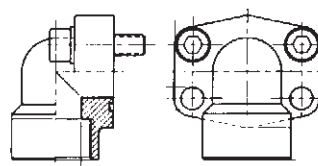
B4

SAE-UN 'o' ring threaded flange



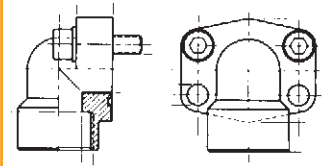
B6

SAE-90° BSPP threaded flange



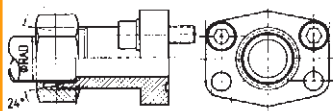
B7

SAE-90° NPT threaded flange



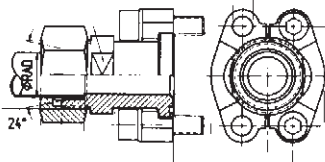
B8

SAE-metric threaded flange DIN 3901/3902



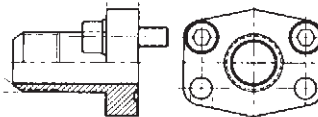
C1

SAE-metric threaded flange DIN 3901/3902



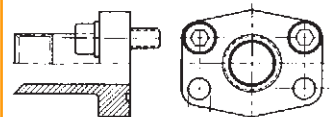
C2

SAE-JIC threaded flange



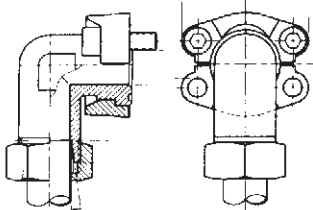
C4

SAE-BSPP threaded flange (male)



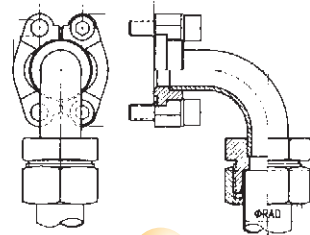
C5

SAE-flange adaptor 90° metric to DIN 3901/3902 (forged)



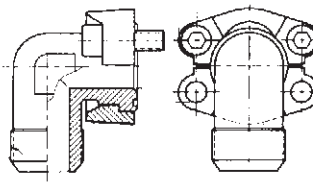
C6

SAE-flange adaptor 90° metric to DIN 3901/3902 (brazed)



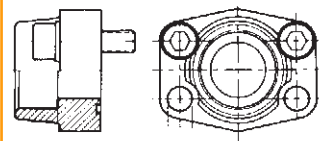
C8

SAE-flange adaptor 90° JIC threaded (forged)



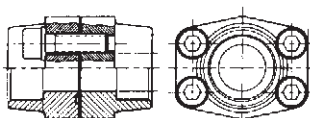
C9

SAE-socket weld flange



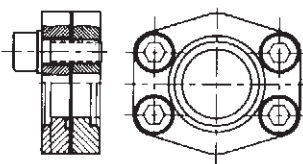
D1

SAE-socket weld coupling



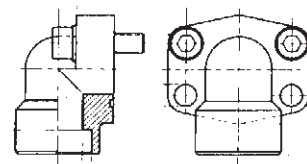
D3

SAE-socket weld flange 500 P.S.I.



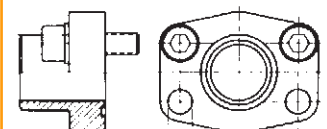
D4

SAE-socket weld flange 90°



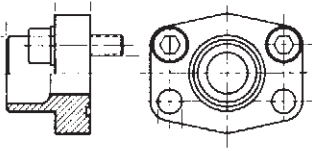
D7

SAE-weld on flange



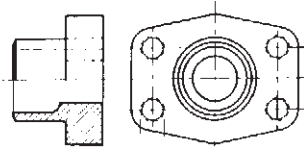
E1

SAE-weld on flange
metric pipes ND 40



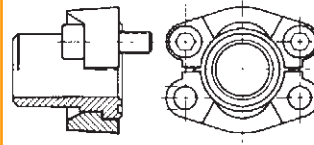
E3

SAE-weld on flange
metric pipes (flat face)



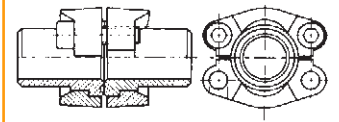
E7

SAE-butt weld insert



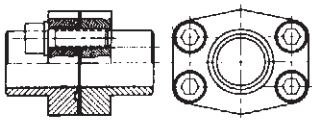
E8

SAE-butt weld coupling
(4 piece)



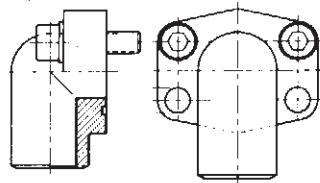
E10

SAE-butt weld coupling
(2 piece)



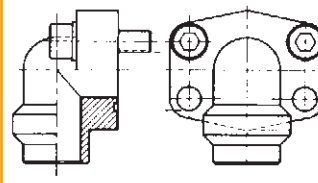
E12

SAE-butt weld flange 90°



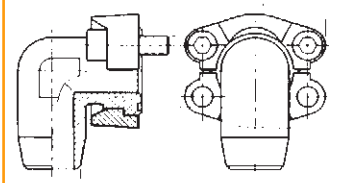
E13

SAE-butt weld flange 90°
for metric pipes



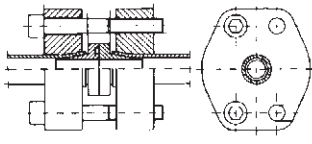
E14

SAE-weld on flange
adaptor for metric pipes



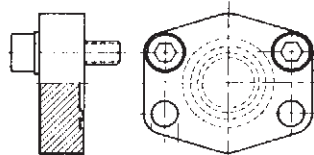
E16

SAE-flare flange



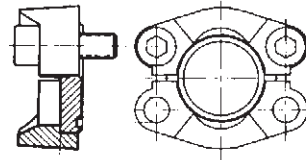
F1

SAE-blanking flange



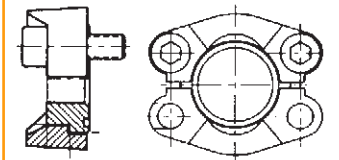
G1

SAE-flange plug



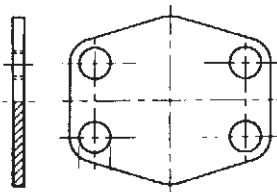
G3

SAE-flange head



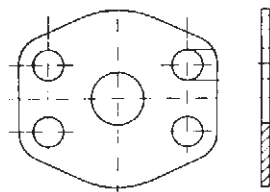
G4

SAE-dust cover



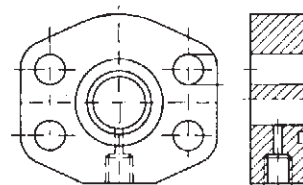
G5

SAE-adaptor plate



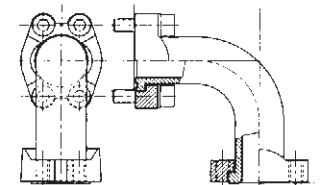
H1

SAE-adaptor flange
with test point



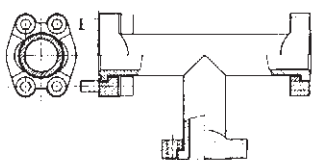
H2

SAE-adaptor 90°
welded



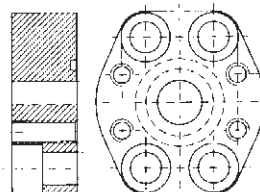
H3

SAE-T connection welded



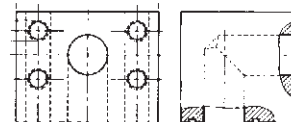
H4

SAE-straight adaptor
flange



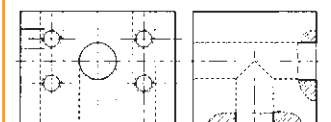
H5

SAE-90° block

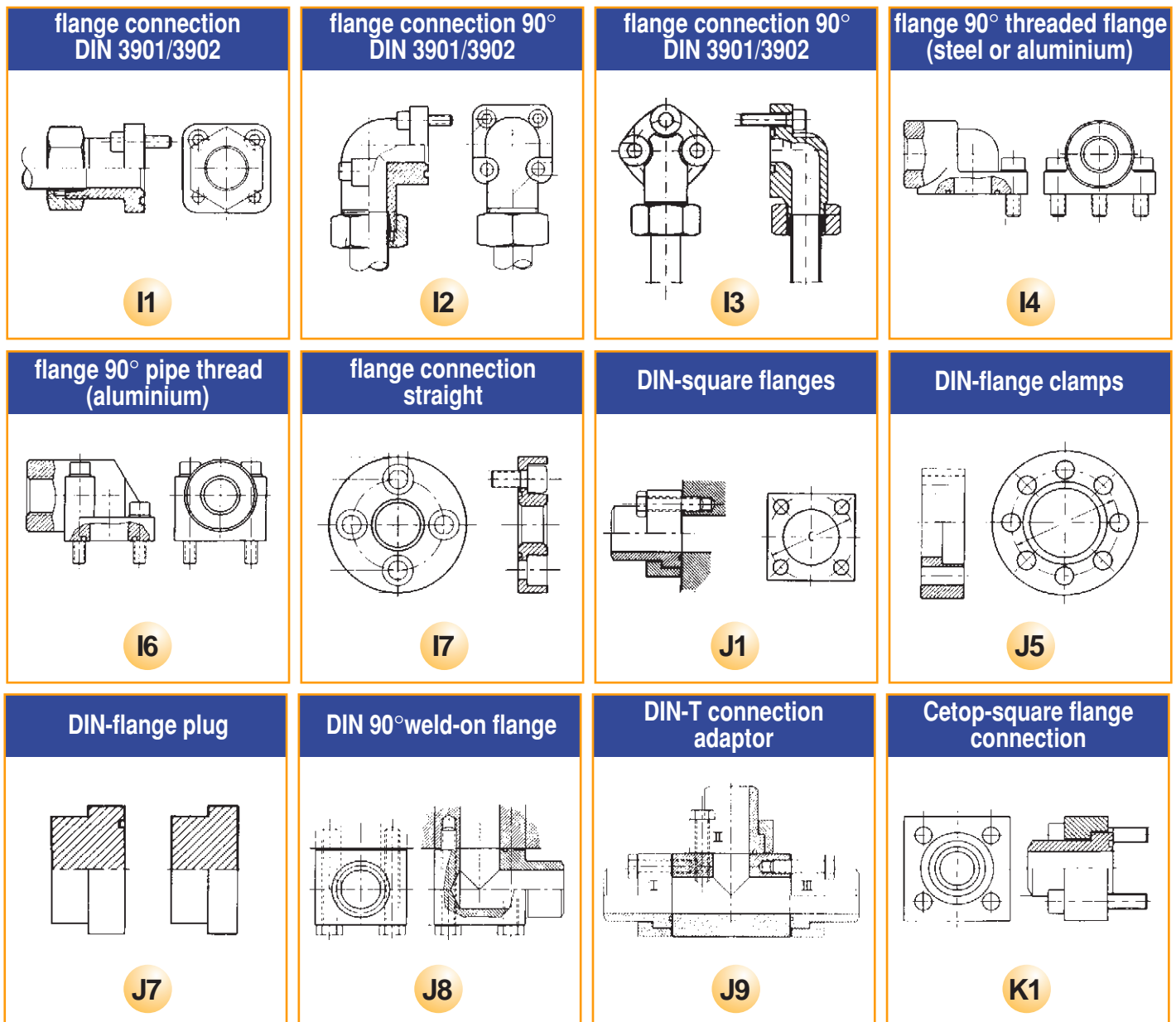


H6

SAE-T block



H8



Flanges Australia stocks thousands of HAVIT hydraulic flanges, adaptors, and special fittings in steel and stainless steel that are shown in our standard catalogue. To help you get the flange or fitting you need as quickly as possible, we have developed this **Quick Reference Guide**.

Scan the guide for the flange or fitting you require and then look up the **Flanges Catalogue** for detailed information on material, dimensions, size etc.

Refers to Page No. of Flanges Catalogue.

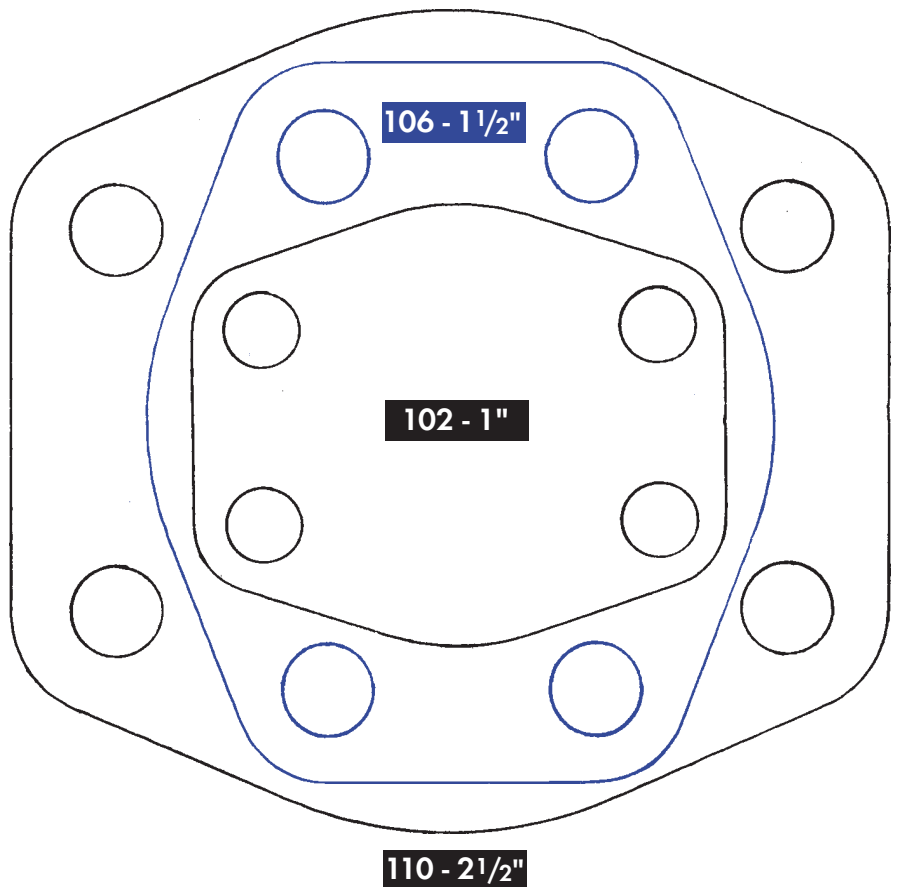
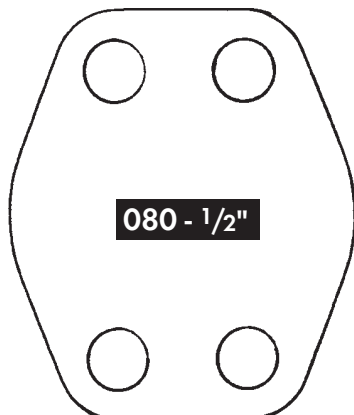
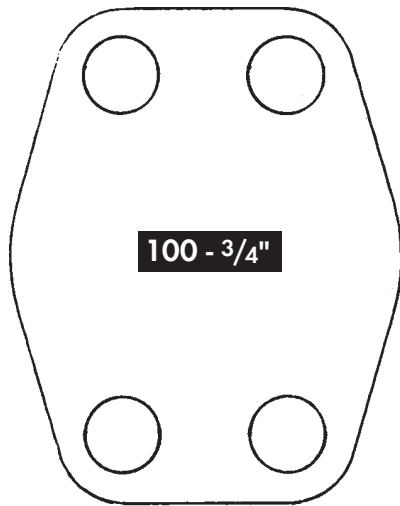
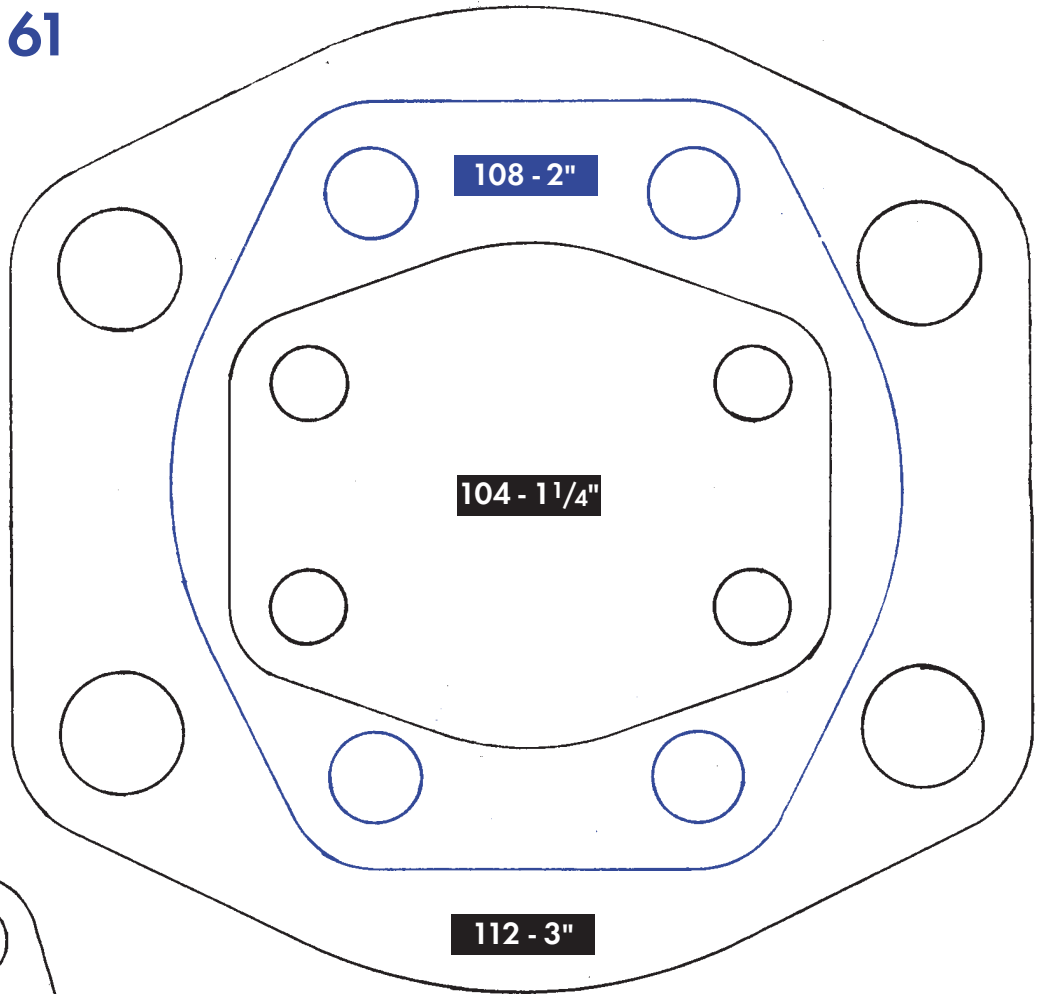


Ph: (07) 3279 2627
 Fax: (07) 3279 2630
 Email: sales@flanges-au.com
 Web: www.flanges-au.com

Quick Reference Bolt Pattern Guide Code 61

INSTRUCTIONS

To determine Flange type & size, place flange over drawing provided & line up bolt holes.



Quick Reference Bolt Pattern Guide Code 62

INSTRUCTIONS

To determine Flange type & size, place flange over drawing provided & line up bolt holes.

